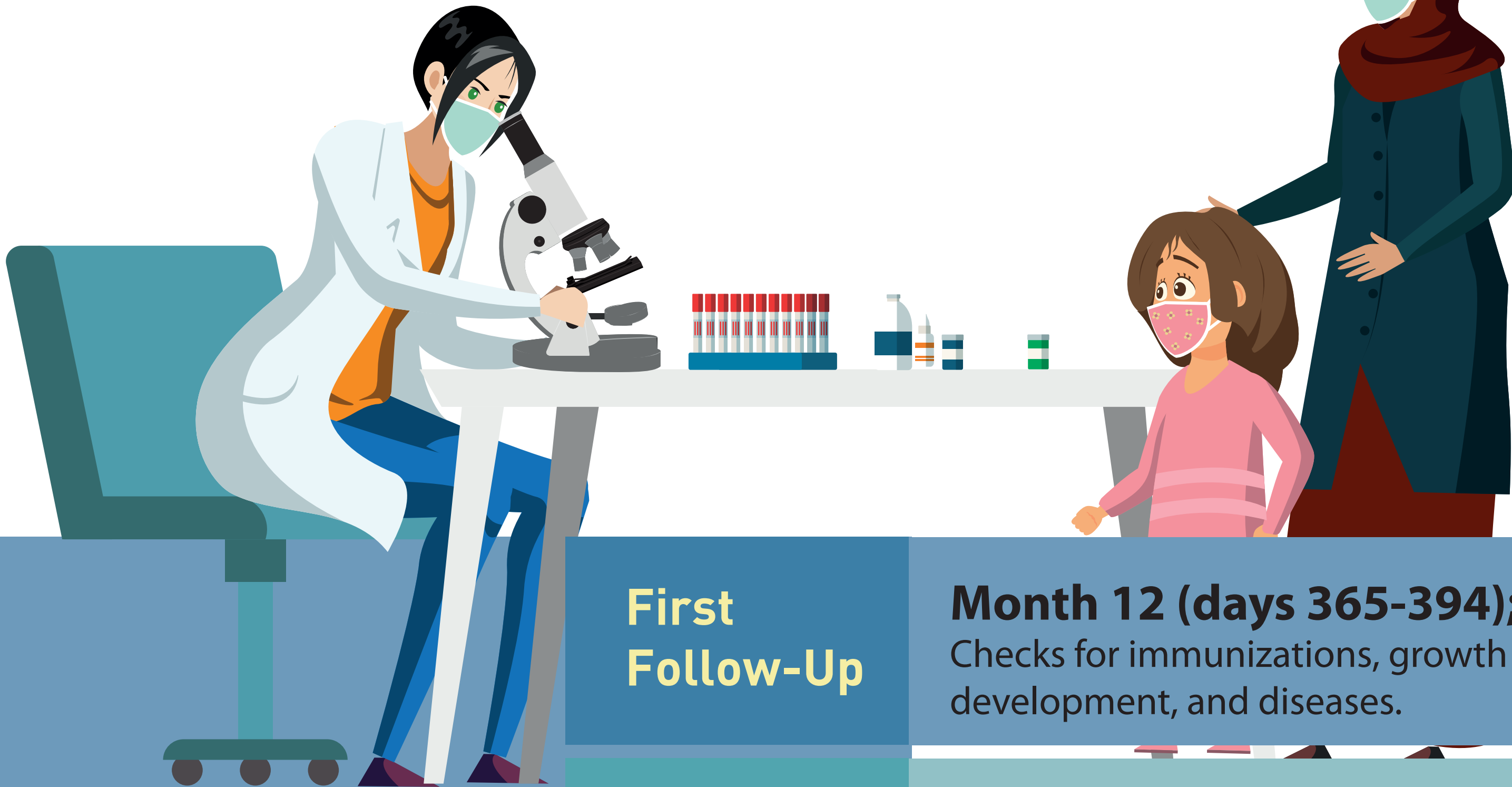


This project is funded by the European Union.  
Bu proje Avrupa Birliği tarafından finanse edilmektedir.  
هذا المشروع تم تمويله من قبل الاتحاد الأوروبي



## TIMING OF PEDIATRIC FOLLOW-UPS

### First Follow-Up

**Month 12 (days 365-394);**  
Checks for immunizations, growth and development, and diseases.

### Second Follow-Up

**Month 18 (days 481-570);**  
Checks for immunizations, growth and development, and diseases.

### Third Follow-Up

**Month 24 (days 661 to 760);**  
Checks for immunizations, growth and development, and diseases.

### Fourth Follow-Up

**Month 30 (days 841 to 930);**  
Checks for immunizations, growth and development, and diseases.

### Fifth Follow-Up

**Month 36 (days 1021 to 1110);**  
Blood pressure measurement, assessment of previously identified problems, and special attention to possible child abuse and neglect.

### Sixth Follow-Up

**Month 48 (days 1321 to 1530);**  
Hearing and vision examinations.

### Seventh Follow-Up

**Month 60 (days 1681 to 1890);**  
HGB/HTC checks for anemia.

*Reference: General Directorate of Public Health, Department of Child and Adolescent Health, Infant, Child and Adolescent Follow-up and Follow-Up protocols (accessed on 1 December 2021)*

**RIGHT PLACE, QUALITY SERVICES**

Contact the nearest Migrant Health Centre for more information and support.